

School of Medicine Learning Spaces	Written by: Sandra Feaster
Name of Policy: Identification of Physical Findings During Learner Exercises or Assessment in the School of Medicine (SOM) Learning Spaces (3 pages)	Approvals: Mary Ayers Assistant Director, CISL Operations and Learning Spaces David Gaba, MD, Associate Dean, CISL
Document Archive Location: CISL Medicine Box	Approval Date: March 15, 2016

1. **Purpose:** To provide guidance for faculty and students should an unexpected physical finding be identified on a patient actor, student, or volunteer during a learning exercise or assessment in the SOM Learning Spaces (practicing a history and physical, performing an echocardiography). Note: Students may identify an actual or perceived finding while part of their education experience that may or may not be accurate.

2. Policy

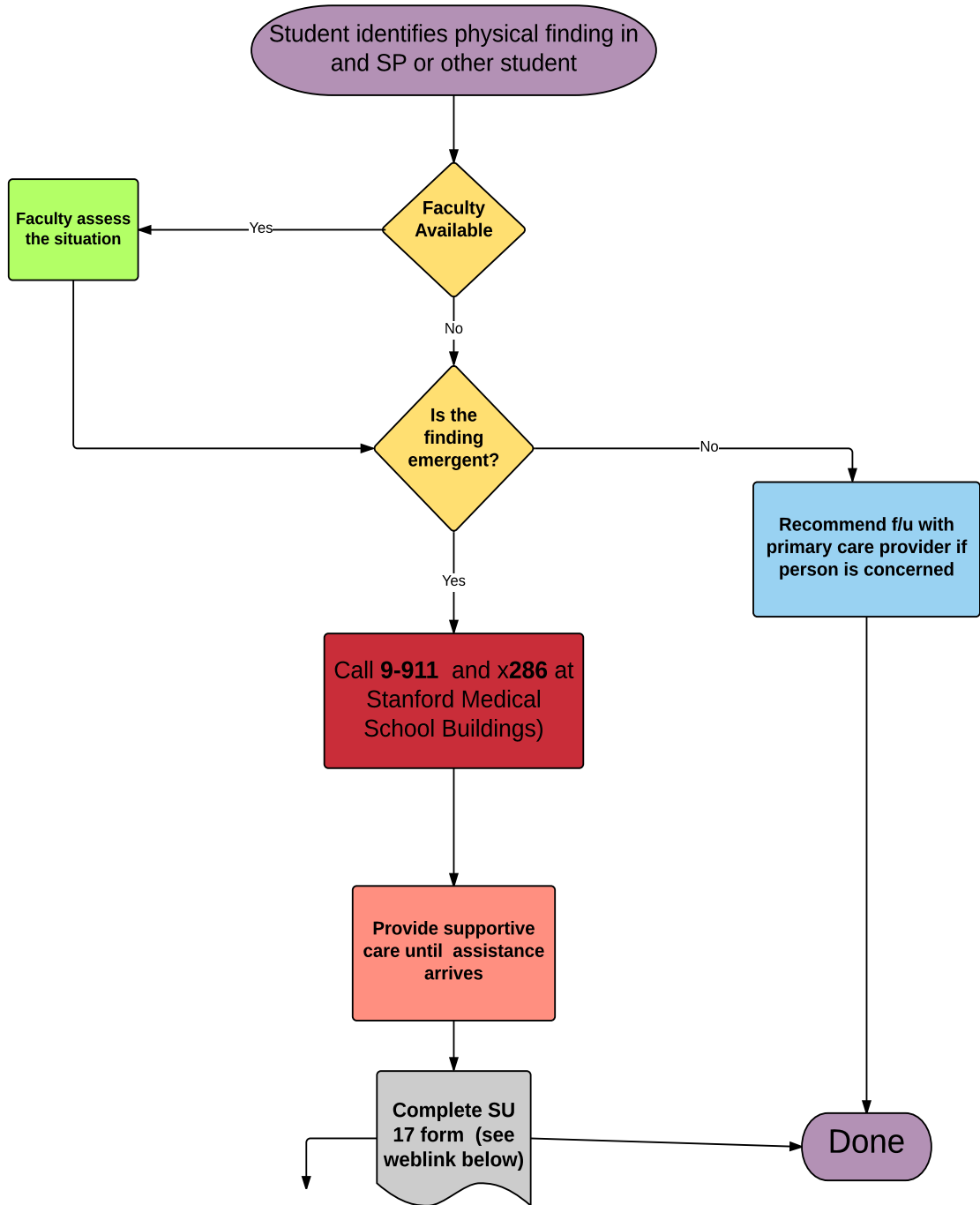
- a. School of Medicine Learning Spaces are considered non-clinical spaces and do not provide for medical care.
- b. The Immersive Learning Center in the LKSC does NOT substitute for a medical facility, despite having medical equipment and other clinically appearing equipment and supplies. This space should NOT be utilized to render medical care.
- c. For purposes of this policy, a physical finding is defined as a medical condition that was identified through examination that was not an expected finding (murmur, skin lesion, etc.) of the learning exercise.

3. Procedure

- a. In the event that a student identifies a physical finding in another student, patient actor, or volunteer for an exercise the student will confer with his/her faculty.
- b. The faculty will then make the judgment if the finding is emergent or not. If the finding is not emergent, the faculty will encourage follow up with a primary care physician. (NOTE: faculty are NOT considered the primary care provider for the person where the finding was identified.)
- c. If the finding is emergent – refer to the Emergency Medical Services in the School of Medicine Learning Spaces. If that individual requires **immediate emergency care**, the first responder (staff, faculty) will:
 - i. Call **9-911** for emergency care management and a secure transport to a hospital emergency department (NOTE: this will go to local EMS provider)
 - ii. Obtain AED if indicated
 - iii. Call **Stanford Health Care Security – 723-2222**
 - iv. Provide support to the individual while awaiting arrival of EMS

- personnel (up to and including Basic Life Support)
 - v. Request assistance from someone with medical expertise (physician, nurse) that may be nearby
 - vi. Stay with the person in need until assistance arrives
 - vii. Complete an SU-17 with the assistance of the CISL Learning Spaces Team or SOM employee. <https://web.stanford.edu/dept/Risk-Management/docs/forms/su-17.html>
- d. If the individual's condition does not require a secure transport to an emergency department, or the individual refuses an ambulance, the employee will:
- i. Direct the individual to Stanford Healthcare's emergency department including assistance as may be appropriate.
 - ii. If the individual intends to drive to the emergency department, the employee will contact the emergency department and inform the emergency department staff at the receiving hospital of the individual's expected arrival, condition and status.
 - iii. Complete an SU-17 <https://web.stanford.edu/dept/Risk-Management/docs/forms/su-17.html>
- e. Documentation Requirement
- i. In all instances, a SOM employee must document the incident on an SU-17.

Identification of Physical Finding in SOM Learning Spaces



<https://web.stanford.edu/dept/Risk-Management/docs/forms/su-17.html>